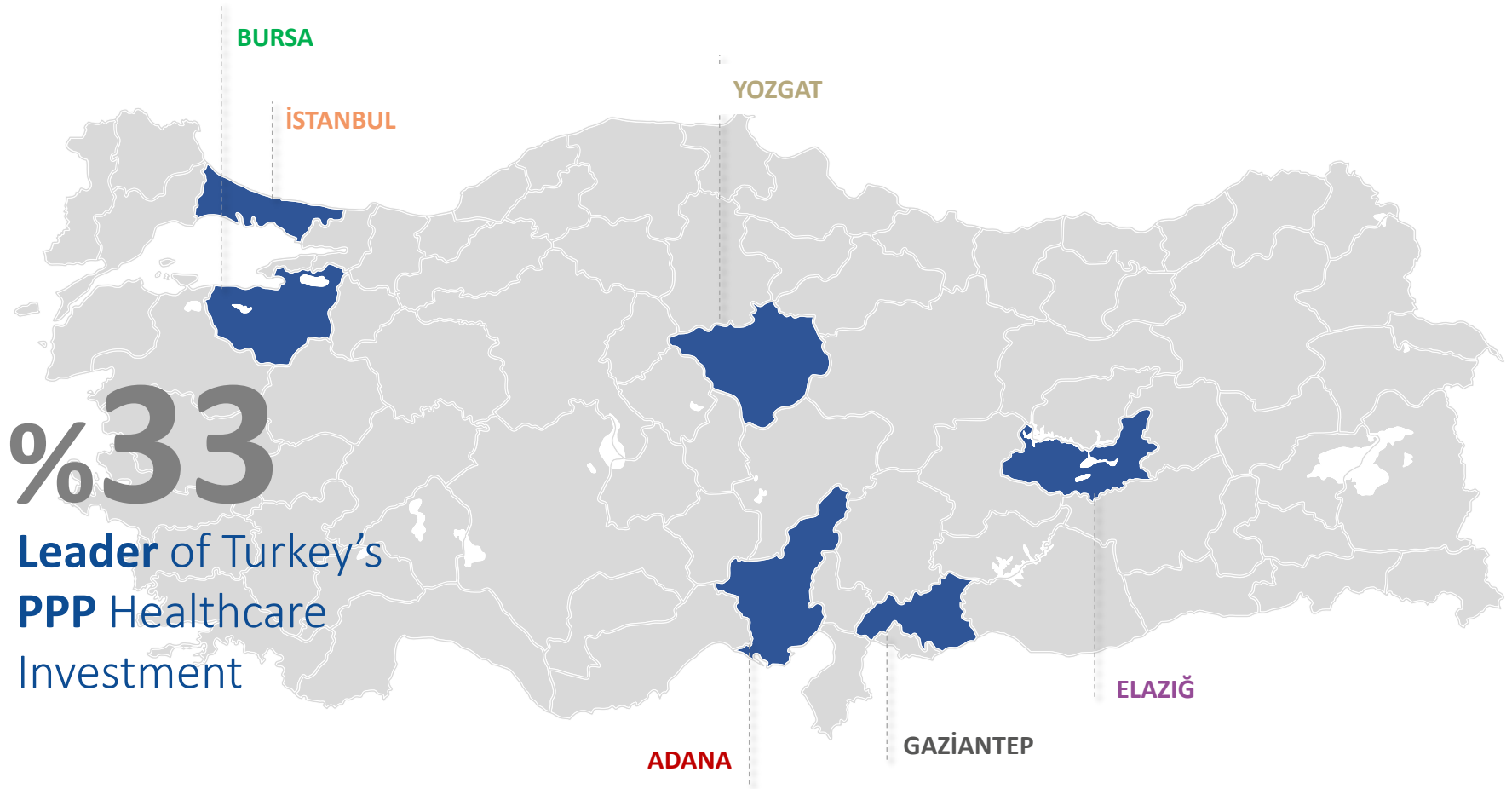




PROJECT PORTFOLIO



%33
**Leader of Turkey's
PPP Healthcare
Investment**

İstanbul Başakşehir City Hospital
2.682 Bed Capacity

Elazığ City Hospital
1.038 Bed Capacity

Adana City Hospital
1.550 Bed Capacity

Yozgat City Hospital
475 Bed Capacity

Bursa City Hospital
1.355 Bed Capacity

Gaziantep City Hospital
1.875 Bed Capacity

GAZIANTEP CITY HOSPITAL



MAIN HOSPITAL

General Hospital | Cardiovascular Hospital | Oncology Hospital | Women's & Children Hospital


PHYSICAL TREATMENT AND REHABILITATION HOSPITAL

HIGH SECURITY FORENSIC PSYCHIATRY HOSPITAL

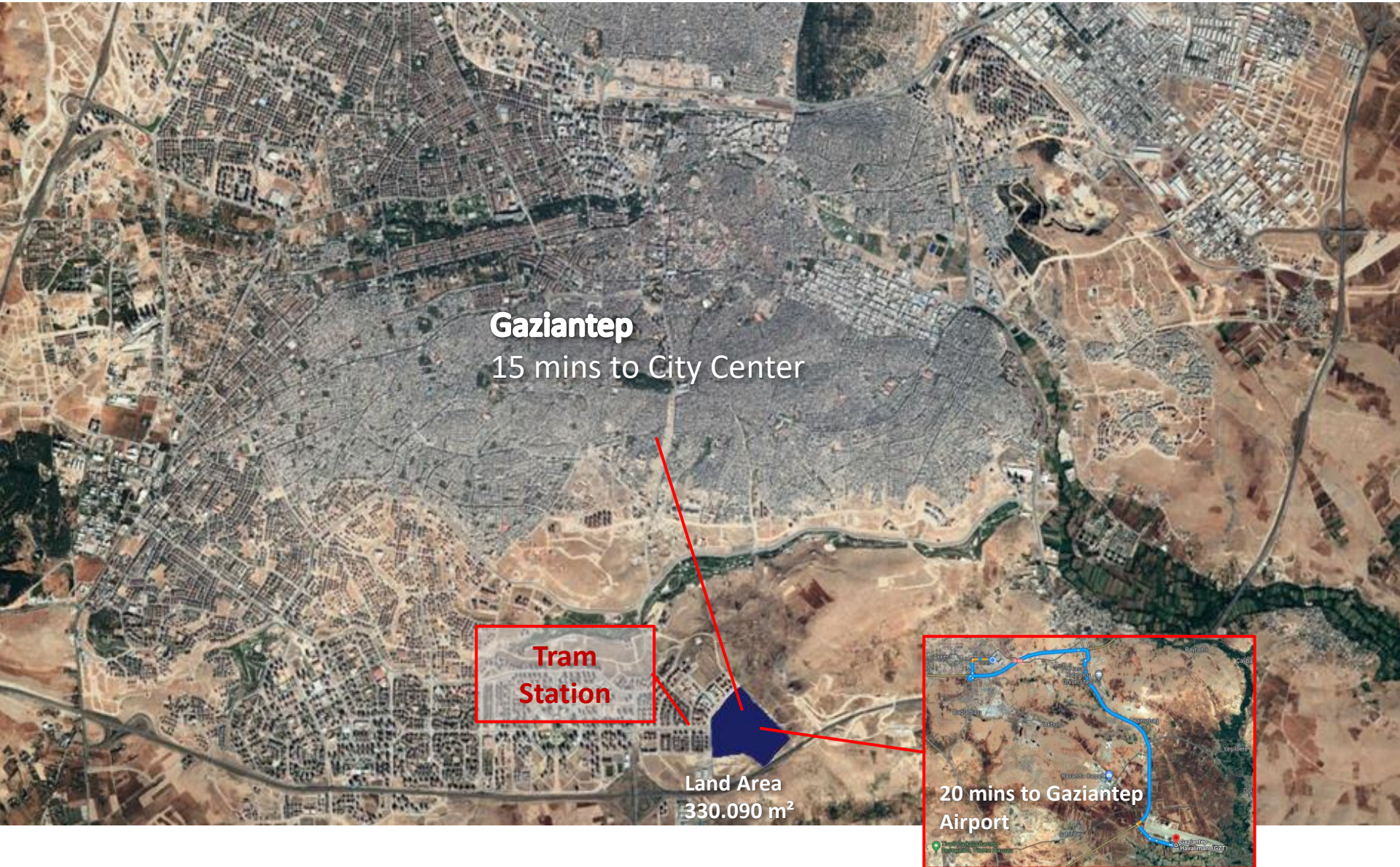
 Bed Capacity
1.875

 Construction Duration
24 Months

 Total Construction Area (m²)
638.088

 Land Area (m²)
330.090

LOCATION



PROGRESS INFORMATION

As of 06 January 2023



TOTAL PROGRESS

68%



Earthworks

99%



Concrete Works

100%



Insulation Works

85%



Finishing Works

54%



Facade Works

64%



Mechanical Works

50%



Electrical Works

41%



Procurement

87%

GAZIANTEP CITY HOSPITAL

GENERAL VIEW



GAZIANTEP CITY HOSPITAL

GENERAL VIEW

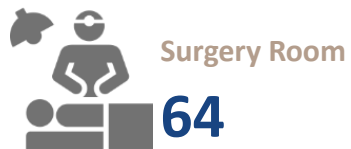
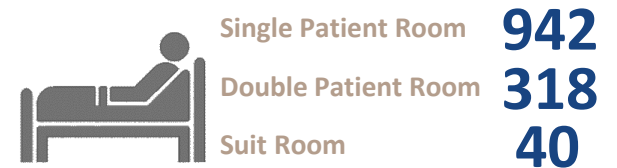
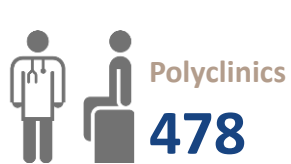


GAZIANTEP CITY HOSPITAL

MAIN HOSPITAL



GENERAL INFORMATION



DAILY USER STATISTICS

Estimated Daily User Numbers in Operation Period



Inpatient

1.875



Outpatient

15.000



Emergency
Patient

2.000



Companion

1.325



Visitor

11.000



Medical
Staff

3.000



Service
Staff

2.500



Administrative
Staff

450

TOTAL **~37.150** DAILY USERS
5.950 PERMANENT EMPLOYMENT