

SACE Exporter Day LIWA Plastics

Milan, 30th May 2016

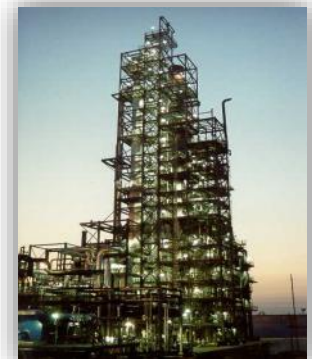
CB&I Oil & Gas

Dorus Everwijn



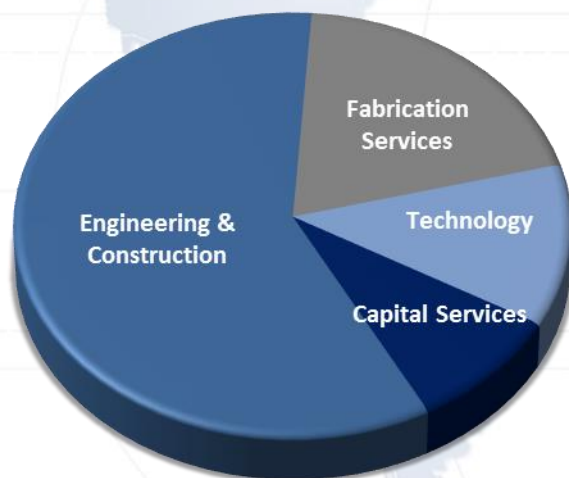


- Chicago Bridge & Iron, N.V.
- Founded in 1889
- Revenue of USD 16.3 billion (2014)
- Backlog of USD 23 billion (December 2015)
 - 70% / 30% U.S. versus international
 - 60% / 40% lump-sum and hybrid vs. reimbursable
- ± 42,000 Employees
- 50,000 Subcontractors
- 100 Locations throughout the World
- Technology, EPFC, Power and Fabrication Services
- More than 125 years of experience and expertise in reliable solutions





Q4 2015 Adjusted Operating Income*
\$279.3 million



**Total operating group income from operations excluding nuclear disposition charges. See Reconciliation of Non-GAAP Supplemental Information*

Technology

- Licensed technology
- Proprietary catalysts
- Technical services

Engineering & Construction

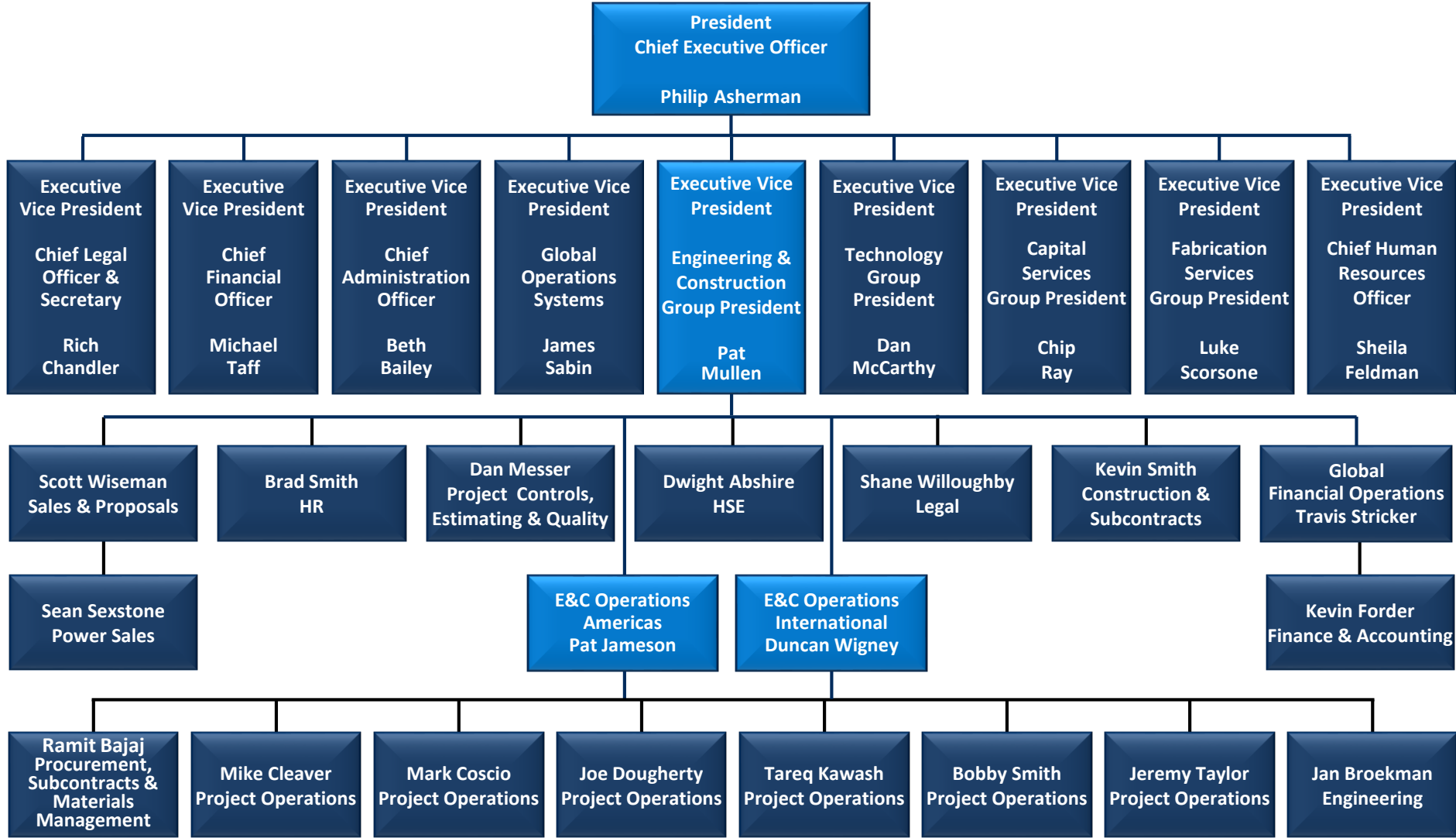
- Procurement
- Construction
- Commissioning

Fabrication Services

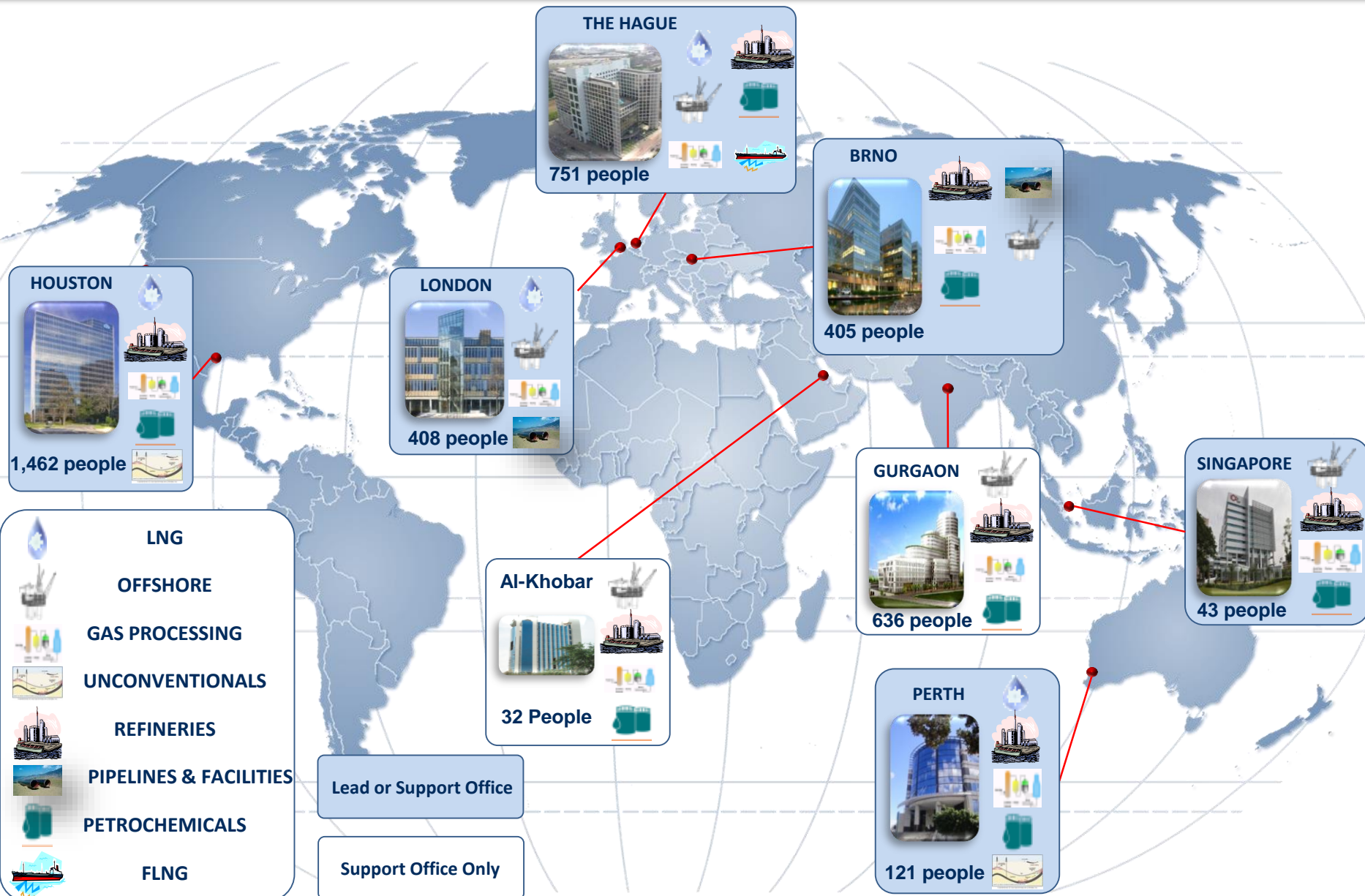
- Fabrication & erection
- Process & modularization
- Pipe fitting and distribution
 - Engineered products
 - Specialty equipment

Capital Services

- Program management
- Maintenance services
- Remediation and restoration
 - Emergency response
 - Environmental consulting







Oman Gas, Salalah Gas Plant



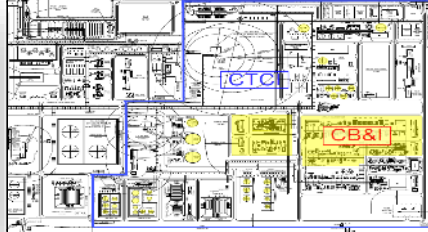
License, FEED and LS EPC Bid

Groupement Isarène, Algeria



FEED, +30/10% Cost Estimates,
development of Long Lead Items

ORPIC LIWA Plastics Project , Oman



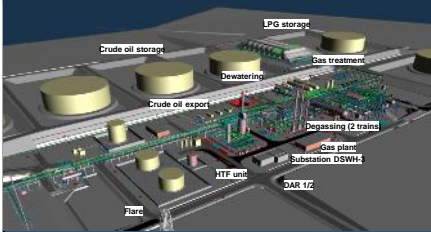
Ethylene Cracker
EPC

Saudi Aramco Shell Refinery Company
(SASREF), Saudi Arabia



FEED (FED1/2/3) including Cost
Estimates and an EPC ITB package

DONG Oil Pipe A/S,
Fredericia, Denmark

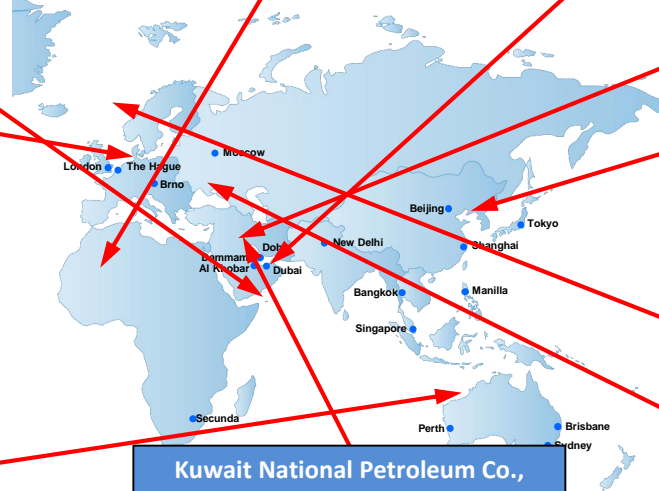


Hejre Crude Stabilization Project
EPC

Confidential, Exmouth Basin, Australia



Floating LNG Studies



Kuwait National Petroleum Co.,
Kuwait



Detailed Engineering & Procurement
for 3 CB&I Technology Units

Statoil / HHI – Offshore Norway /
Ulsan, Korea



Integrated Topsides Design for World
Largest Spar

NefteGazIndustriya - Afipsky, Russian
Federation



License, FEED & Detailed Engineering
for Hydrocracker Complex

Client : Oman Oil Refineries and Petrochemical Industries Company (ORPIC)

Location : Sohar, Oman

Type of facility : Steam Cracker Unit with associated process units, off-site works and utilities

Products/ capacities : Ethylene – 867 kt/a, Propylene 295 kt/a, MTBE – 87 kt/a, Butene 1 – 39 kt/a, Pyrolysis Gasoline – 111.5 kt/a

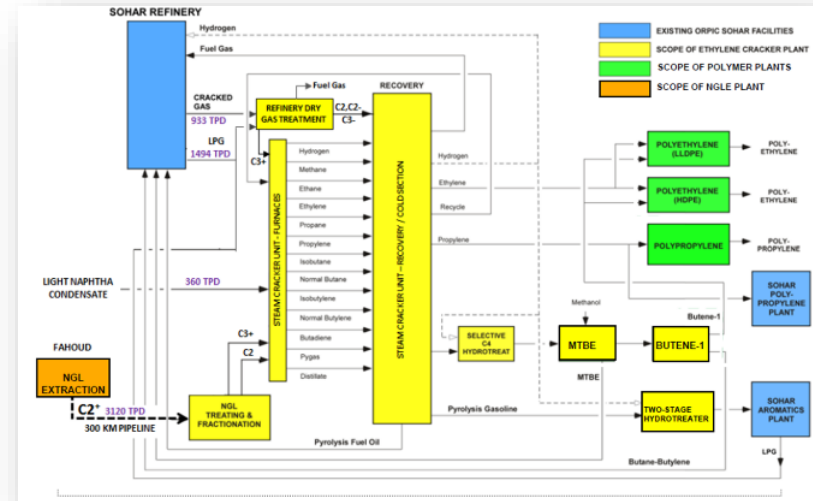
Feed : NGL (C2+), mixed LPG, refinery dry gas and light naphtha.

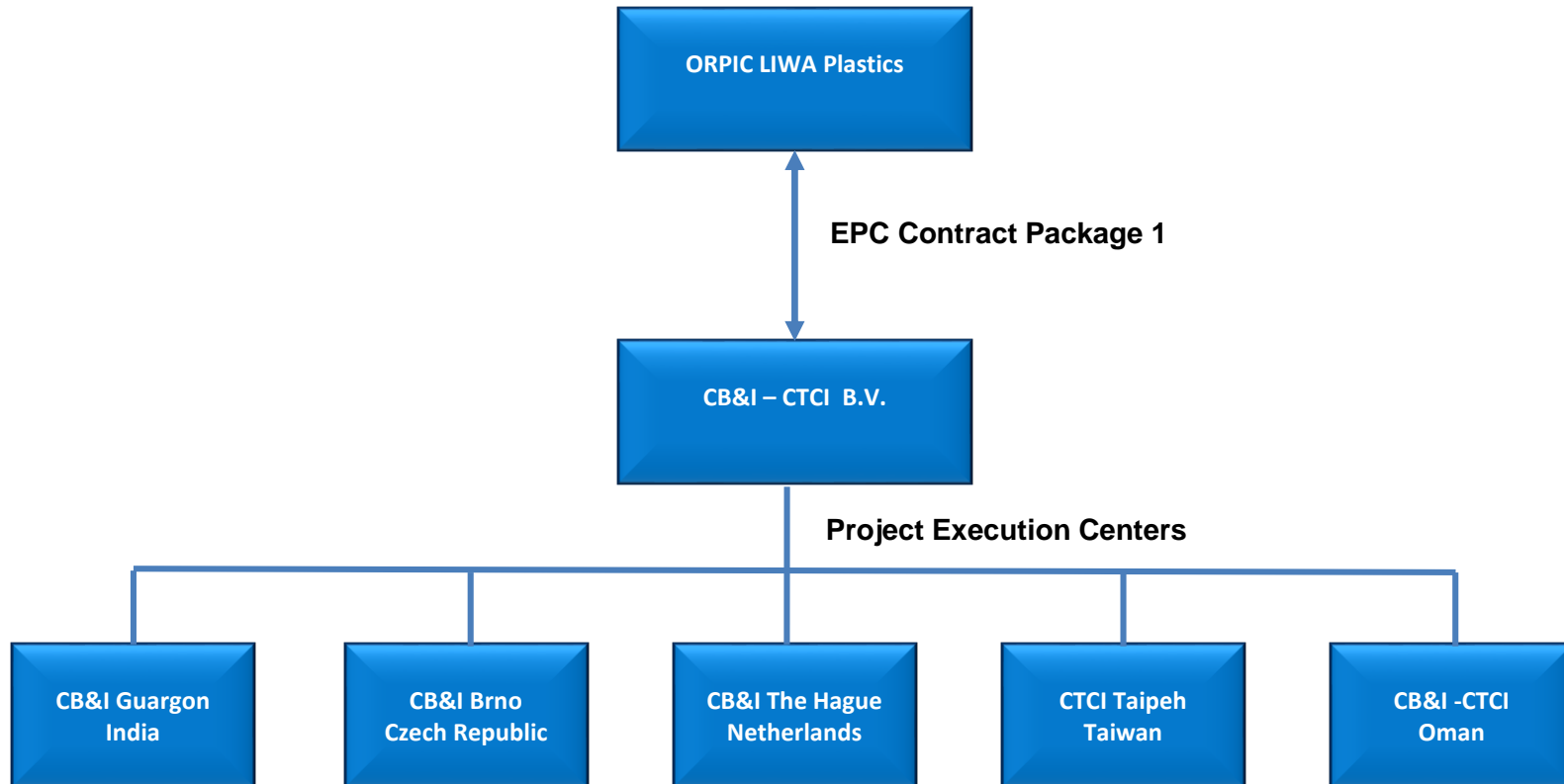
Scope of Work : Engineering, Procurement, Installation, Construction, Testing, (pre-) Commissioning, Start-Up and Performance Testing.

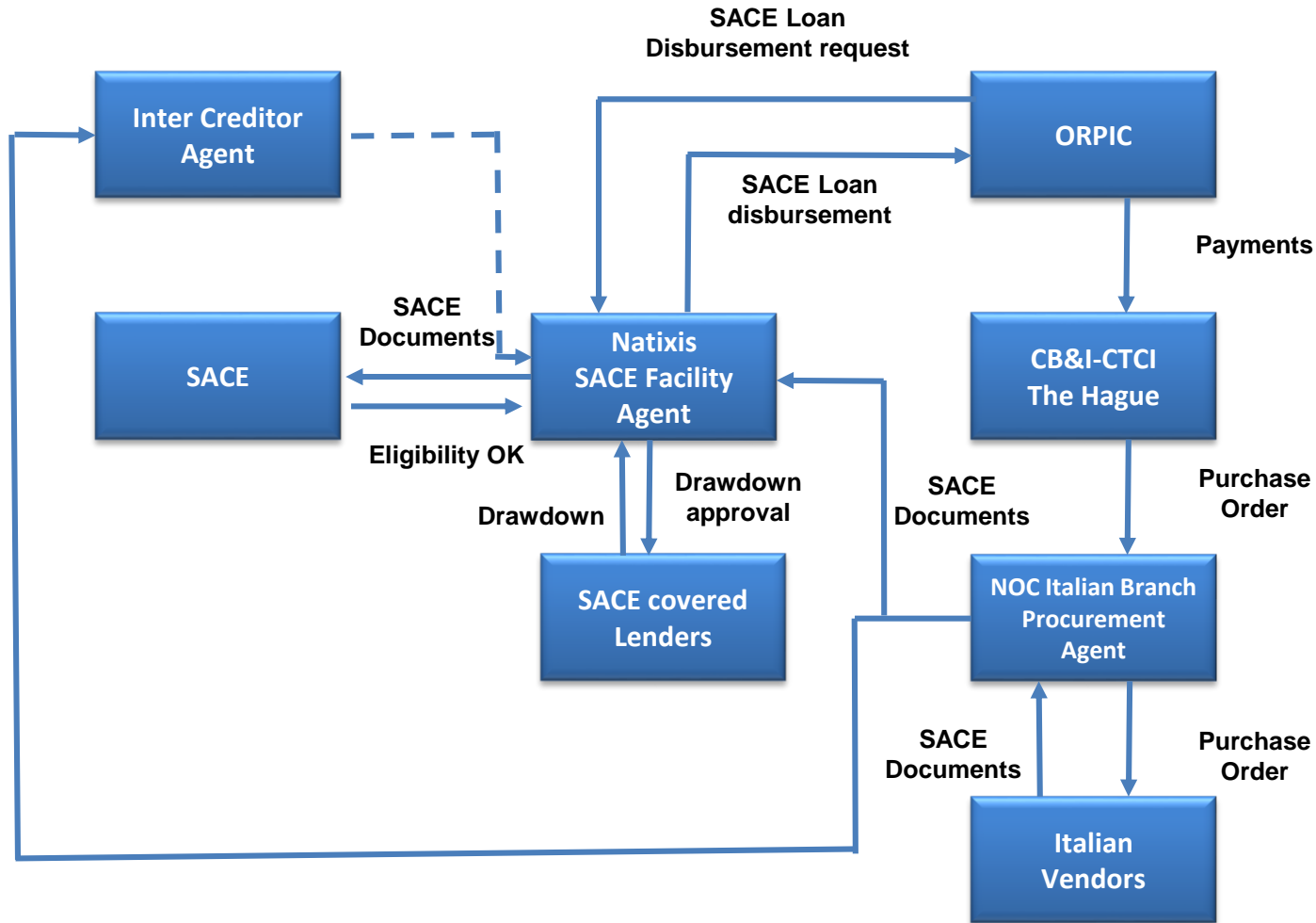
Type of Contract : Lump Sum Turn Key

Schedule : 48 months (Initial Acceptance)
Completion: Q1 2020

Project Summary : After successful completion of contracts for FEED services, license and engineering design of four packages, CB&I as leader of a Joint Venture with CTCL, was awarded the contract for the EPC phase for Package 1 of this project, which includes the Steam Cracker with associated process units, Off-Site Works, Utilities, Jetty works and interconnecting piping









Procurement Agent is 100% CB&I Group Company



- Static Equipment
- Aircoolers
- Piping
- Instrumentation
- Rotating
- Electrical
- Special Equipment
- Compressors
- Subcontracts
 - Painting
 - Insulation
 - Scaffolding
 - Heavy lift



- Vendors/Subcontractors need to be prequalified by ORPIC LIWA
- Vendors/Subcontractors need to be prequalified by CB&I – CTCI JV
- Competition is global !
- Procurement contact: Mr. M. Jonker mjonker@cbi.com

